

LUFT- UND SCHLAMMABSCHIEDER

SPIROCOMBI®



SPIROCOMBI® Messingausführungen

SPIROCOMBI® MB3 – Messingausführungen mit universalem Anschluss

STANDARD

Art.-Nr.	Anschluss d	H [mm]	b [mm]	B [mm]	L [mm]	D [mm]	h [mm]	h1 [mm]	e2	x [mm]	y [mm]	Max. Durchsatz [m³/h]	Max. Durchsatz [l/s]	Inhalt [ltr]	Gewicht [kg]
UC022WJ	22 mm	272	123	141	120	84	123	149	R½	>100	>75	1,3	0,35	0,53	2,49
UC028WJ	28 mm	272	126	149	120	84	123	149	R½	>100	>75	2,0	0,55	0,53	2,60
UC075WJ	G¾	272	125	142	100	84	123	149	R½	>100	>75	1,3	0,35	0,53	2,41
UC100WJ	G1	272	129	152	100	84	123	149	R½	>100	>75	2,0	0,55	0,53	2,57
UC125WJ	G1¼	406	138	162	128	84	174	232	R½	>100	>75	3,6	1,00	1,47	5,20
UC150WJ	G1½	406	141	168	128	84	174	232	R½	>100	>75	5,0	1,38	1,52	5,30
UC200WJ	G2	406	148	183	128	84	174	232	R½	>100	>75	7,5	2,08	1,61	5,40



Betriebsdruck
max. 10 bar



Temperatur
max. 110 °C



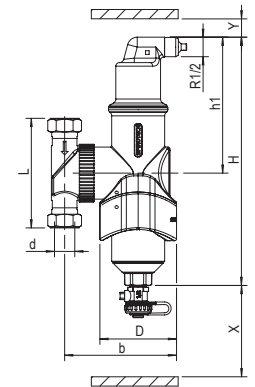
Fließgeschwindigkeit
1 m/s



mit Magnet



Geeignet für den Einsatz in Kühlsystemen



SPIROCOMBI
MB3

SPIROCOMBI® MAGNET – Stahlausführungen mit Magnet für normale Fließgeschwindigkeit

Art.-Nr.	DN	OD	H	h1	h	D	L/LF	H1	e1	ext.	e	int.	e2	ext.	x	xr	y	Max. Durchsatz	Max. Durchsatz	Δp bei max. Durchsatz	Inhalt	Ge- wicht
		[mm]	[mm]	[mm]	[mm]	[mm]	[mm]	[mm]							[mm]	[mm]	[mm]	[m³/h]	[l/s]	[kPa]	[ltr]	[kg]
BC050LM	50	60,3	471	121	341	159	260	750	G¾	(M)	Rp1	(F)	R½	(M)	>75	330	>50	12,50	3,47	3,0	7,0	12,0
BC050FM	50	60,3	471	121	341	159	350	750	G¾	(M)	Rp1	(F)	R½	(M)	>75	330	>50	12,50	3,47	3,0	7,0	16,0
BC065LM	65	76,1	471	129	333	159	260	750	G¾	(M)	Rp1	(F)	R½	(M)	>75	330	>50	20,00	5,56	2,9	7,0	12,0
BC065FM	65	76,1	471	129	333	159	350	750	G¾	(M)	Rp1	(F)	R½	(M)	>75	330	>50	20,00	5,56	2,9	7,0	18,0
BC080LM	80	88,9	576	148	424	219	370	910	G¾	(M)	Rp1	(F)	R½	(M)	>100	370	>50	27,00	7,50	3,1	25,0	24,0
BC080FM	80	88,9	576	148	424	219	470	910	G¾	(M)	Rp1	(F)	R½	(M)	>100	370	>50	27,00	7,50	3,1	25,0	31,0
BC100LM	100	114,3	576	160	412	219	370	910	G¾	(M)	Rp1	(F)	R½	(M)	>100	370	>50	47,00	13,06	3,7	25,0	24,0
BC100FM	100	114,3	576	160	412	219	475	910	G¾	(M)	Rp1	(F)	R½	(M)	>100	370	>50	47,00	13,06	3,7	25,0	32,0
BC125LM	125	139,7	798	193	605	324	525	1200	G¾	(M)	Rp1	(F)	R½	(M)	>100	540	>50	72,00	20,00	4,2	75,0	59,0
BC125FM	125	139,7	798	193	605	324	635	1200	G¾	(M)	Rp1	(F)	R½	(M)	>100	540	>50	72,00	20,00	4,2	75,0	71,0
BC150LM	150	168,3	798	207	591	324	525	1200	G¾	(M)	Rp1	(F)	R½	(M)	>100	540	>50	108,00	30,00	4,9	75,0	59,0
BC150FM	150	168,3	798	207	591	324	635	1200	G¾	(M)	Rp1	(F)	R½	(M)	>100	540	>50	108,00	30,00	4,9	75,0	74,0
BC200FM	200	219,1	1.063	280	773	406	775	1530	G¾	(M)	Rp1	(F)	R½	(M)	>100	700	>50	180,00	50,00	5,8	150,0	133,0
BC250FM	250	273,0	1.265	364	896	508	890	1860	G¾	(M)	Rp1	(F)	R½	(M)	>100	750	>50	288,00	80,00	7,0	300,0	197,0
BC300FM	300	323,9	1.492	426	1.058	610	1.005	2170	G¾	(M)	Rp1	(F)	R½	(M)	>100	900	>50	405,00	112,50	7,8	500,0	319,0



Betriebsdruck
max. 10 bar



Temperatur
max. 110 °C



Fließgeschwindigkeit
1,5 m/s

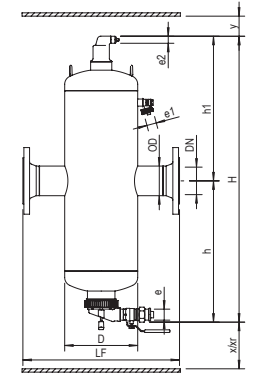


mit Magnet

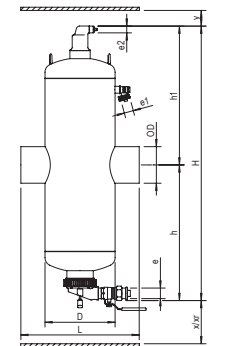


Geeignet für den Einsatz in Kühlsystemen

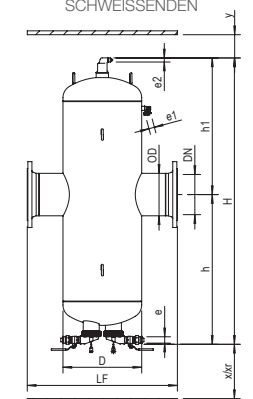
L= Schweißenden / F= Flanschenden (PN 16) / M= Magnet



SPIROCOMBI
FLANSCHAUSFÜHRUNG



SPIROCOMBI
SCHWEISSENDEN



SPIROCOMBI
FLANSCHAUSFÜHRUNG
AB DN 200

SPIROCOMBI® – Stahlausführungen ohne Magnet für normale Fließgeschwindigkeit

Art.-Nr.	DN	OD	H	h1	h	D	L/LF	e1	ext.	e	int.	e2	ext.	x	y	Max. Durchsatz	Max. Durchsatz	Δp bei max. Durchsatz	Inhalt	Ge- wicht
	[mm]	[mm]	[mm]	[mm]	[mm]	[mm]	[mm]							[mm]	[mm]	[m³/h]	[l/s]	[kPa]	[ltr]	[kg]
BC050L	50	60,3	630	365	265	159	260	G¾	(M)	Rp1	(F)	R½	(M)	>200	>50	12,50	3,47	3,0	7,0	12,0
BC050F	50	60,3	630	365	265	159	350	G¾	(M)	Rp1	(F)	R½	(M)	>200	>50	12,50	3,47	3,0	7,0	17,0
BC065L	65	76,1	630	365	265	159	260	G¾	(M)	Rp1	(F)	R½	(M)	>200	>50	20,00	5,56	2,7	7,0	12,0
BC065F	65	76,1	630	365	265	159	350	G¾	(M)	Rp1	(F)	R½	(M)	>200	>50	20,00	5,56	2,7	7,0	18,0
BC080L	80	88,9	785	440	345	219	370	G¾	(M)	Rp1	(F)	R½	(M)	>200	>50	27,00	7,50	2,9	25,0	24,0
BC080F	80	88,9	785	440	345	219	470	G¾	(M)	Rp1	(F)	R½	(M)	>200	>50	27,00	7,50	2,9	25,0	31,0
BC100L	100	114,3	785	440	345	219	370	G¾	(M)	Rp1	(F)	R½	(M)	>200	>50	47,00	13,06	3,7	25,0	24,0
BC100F	100	114,3	785	440	345	219	475	G¾	(M)	Rp1	(F)	R½	(M)	>200	>50	47,00	13,06	3,7	25,0	33,0
BC125L	125	139,7	1.035	560	475	324	525	G¾	(M)	Rp1	(F)	R½	(M)	>200	>50	72,00	20,00	4,2	75,0	58,0
BC125F	125	139,7	1.035	560	475	324	635	G¾	(M)	Rp1	(F)	R½	(M)	>200	>50	72,00	20,00	4,2	75,0	70,0
BC150L	150	168,3	1.035	560	475	324	525	G¾	(M)	Rp1	(F)	R½	(M)	>200	>50	108,00	30,00	4,9	75,0	58,0
BC150F	150	168,3	1.035	560	475	324	635	G¾	(M)	Rp1	(F)	R½	(M)	>200	>50	108,00	30,00	4,9	75,0	73,0
BC200F	200	219,1	1.315	700	615	406	775	G¾	(M)	Rp1	(F)	R½	(M)	>200	>50	180,00	50,00	5,8	150,0	135,0
BC250F	250	273,0	1.730	900	830	508	890	G¾	(M)	Rp2	(F)	R½	(M)	>200	>50	288,00	80,00	6,9	300,0	252,0
BC300F	300	323,9	2.025	1.055	970	610	1.005	G¾	(M)	Rp2	(F)	R½	(M)	>200	>50	405,00	112,50	7,7	500,0	325,0



Betriebsdruck
max. 10 bar



Temperatur
max. 110 °C



Fließgeschwindigkeit
1,5 m/s

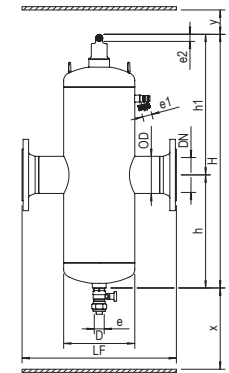


ohne Magnet

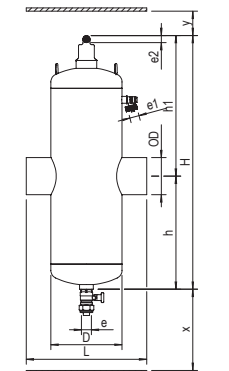


Geeignet für den Einsatz in Kühlsystemen

L= Schweißenden / F= Flanschenden (PN 16)



SPIROCOMBI
FLANSCHAUSFÜHRUNG



SPIROCOMBI
SCHWEISSENDEN